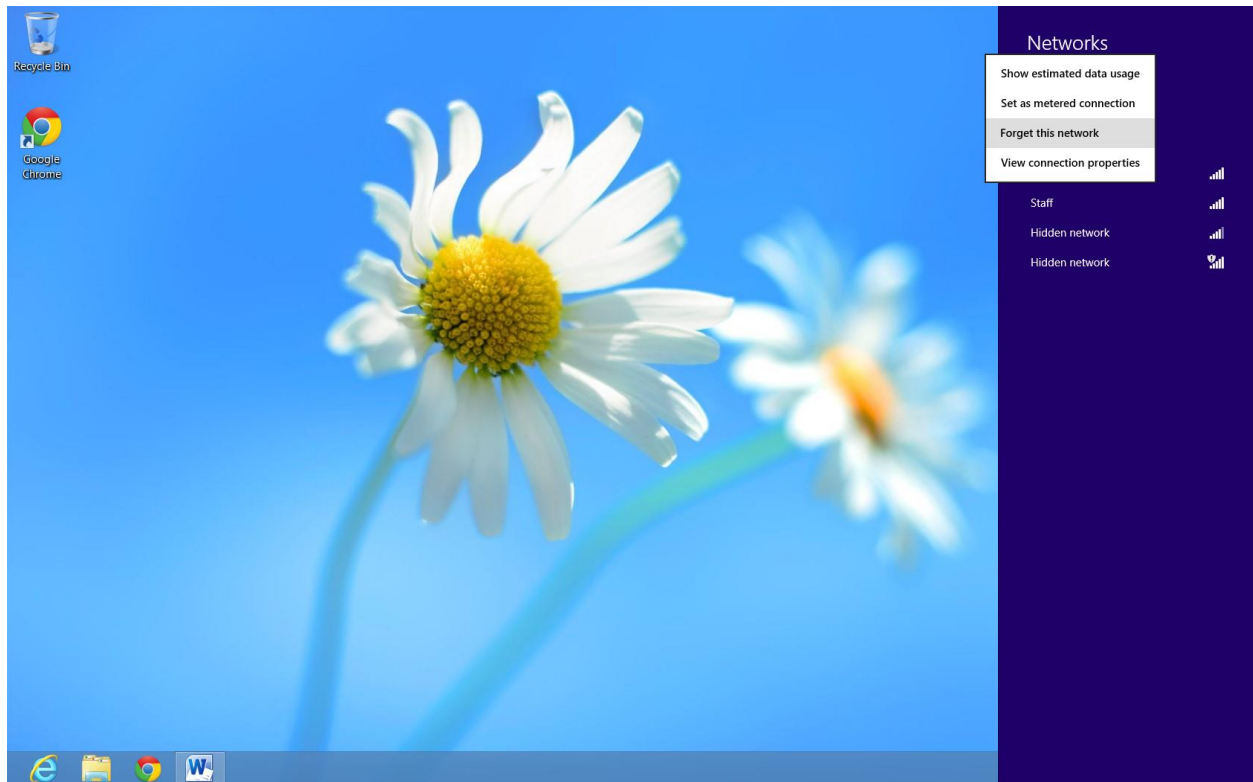


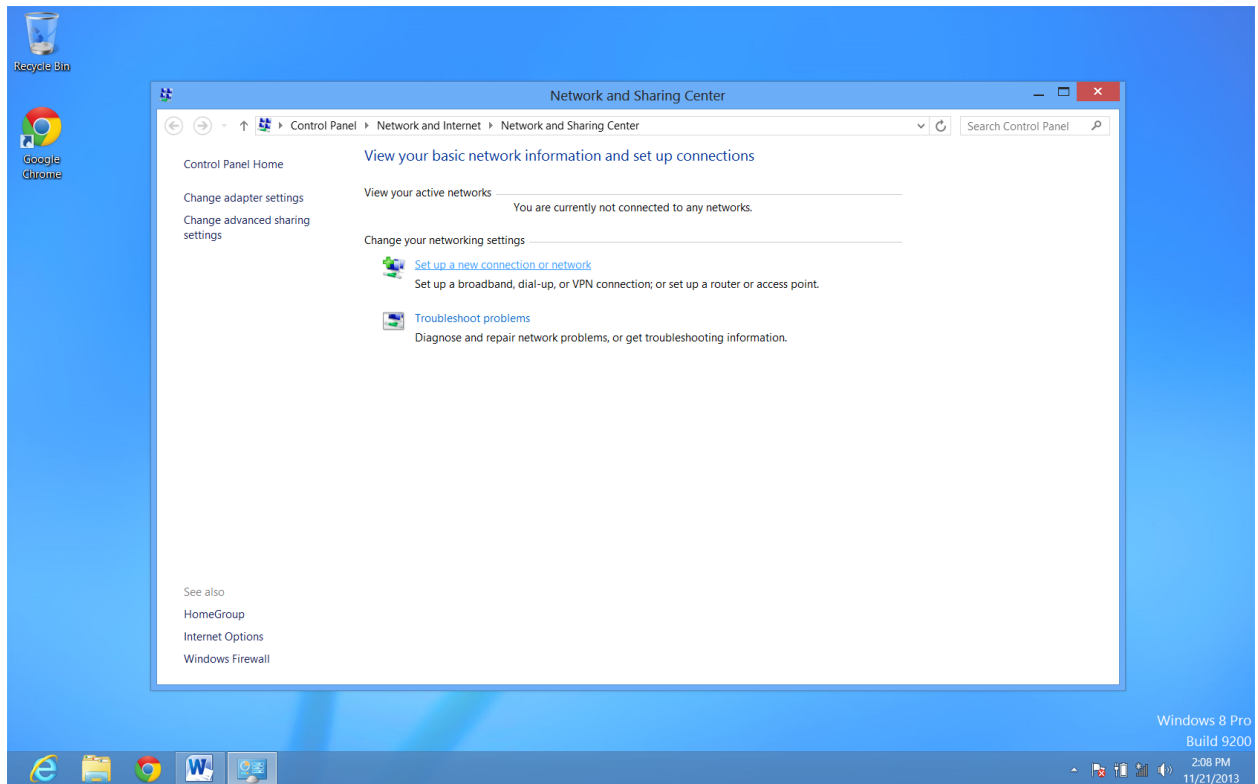
Right click on Student-POD and choose Forget this network



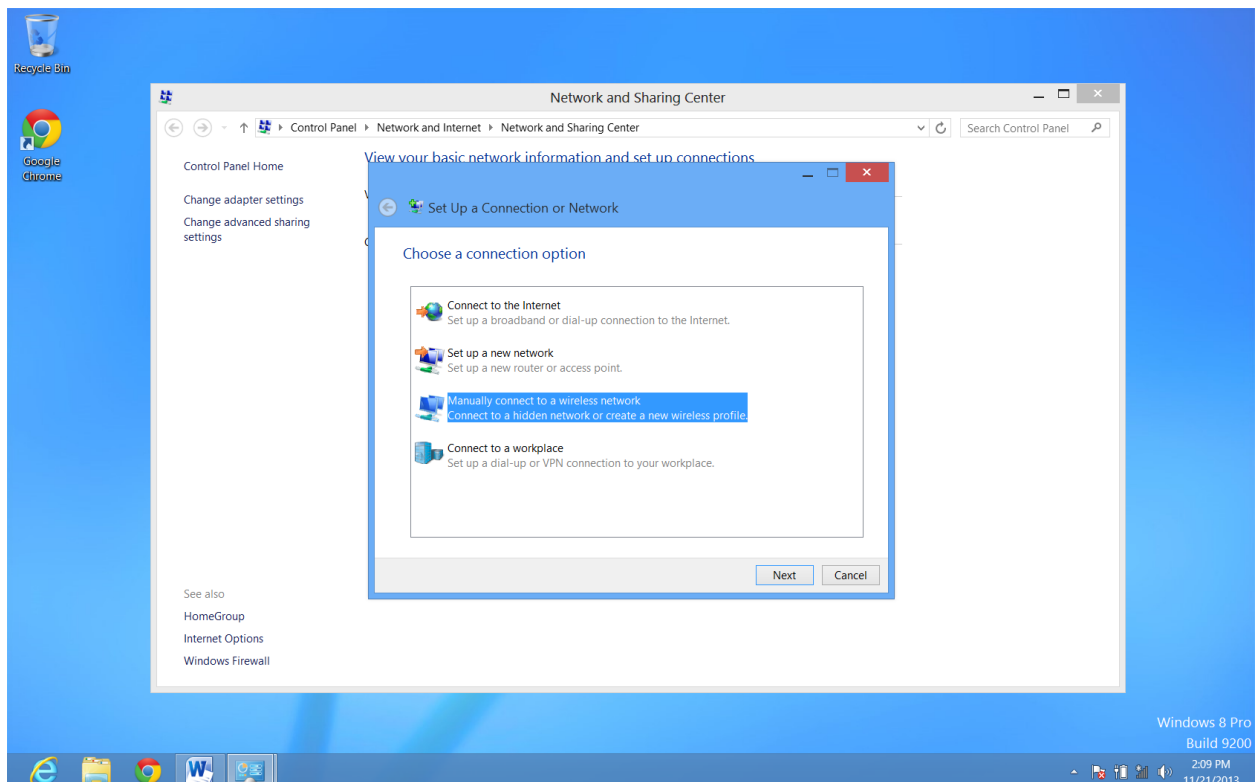
Right click on the wireless in the tool bar and choose Open Network and Sharing Center



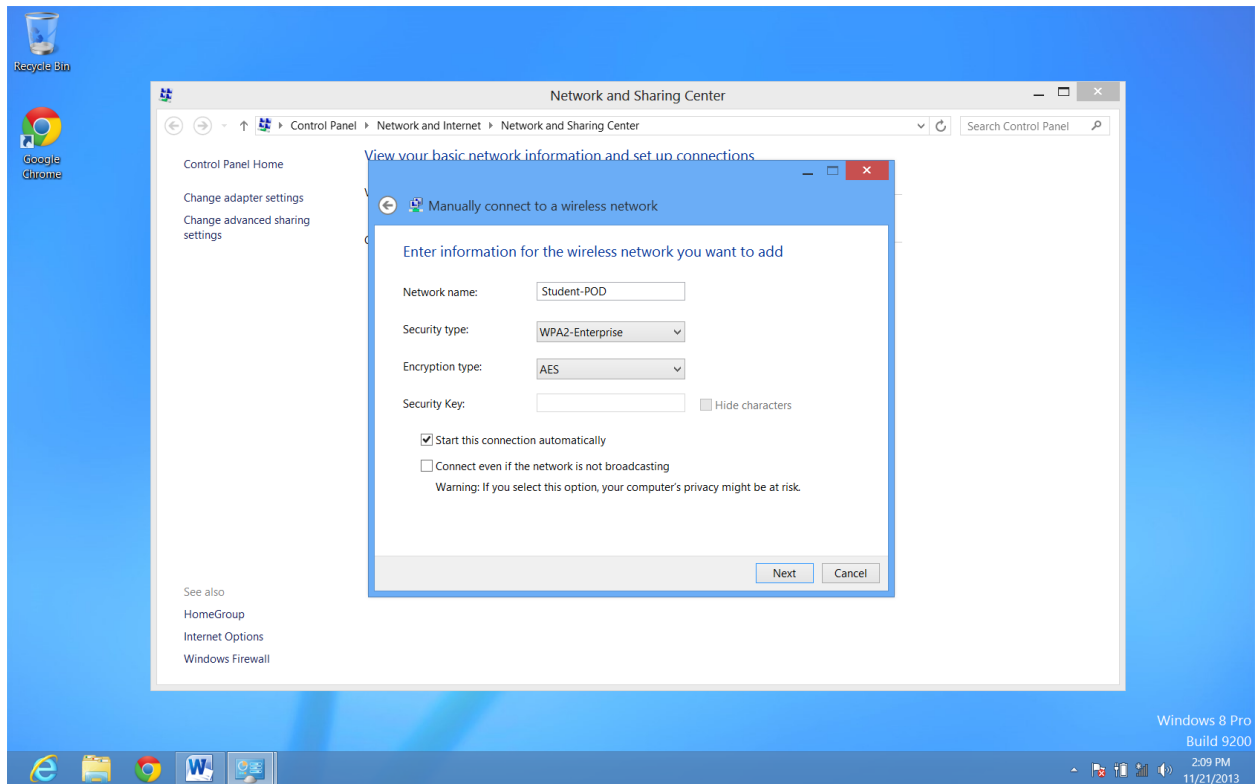
Choose Set up a new connection or network



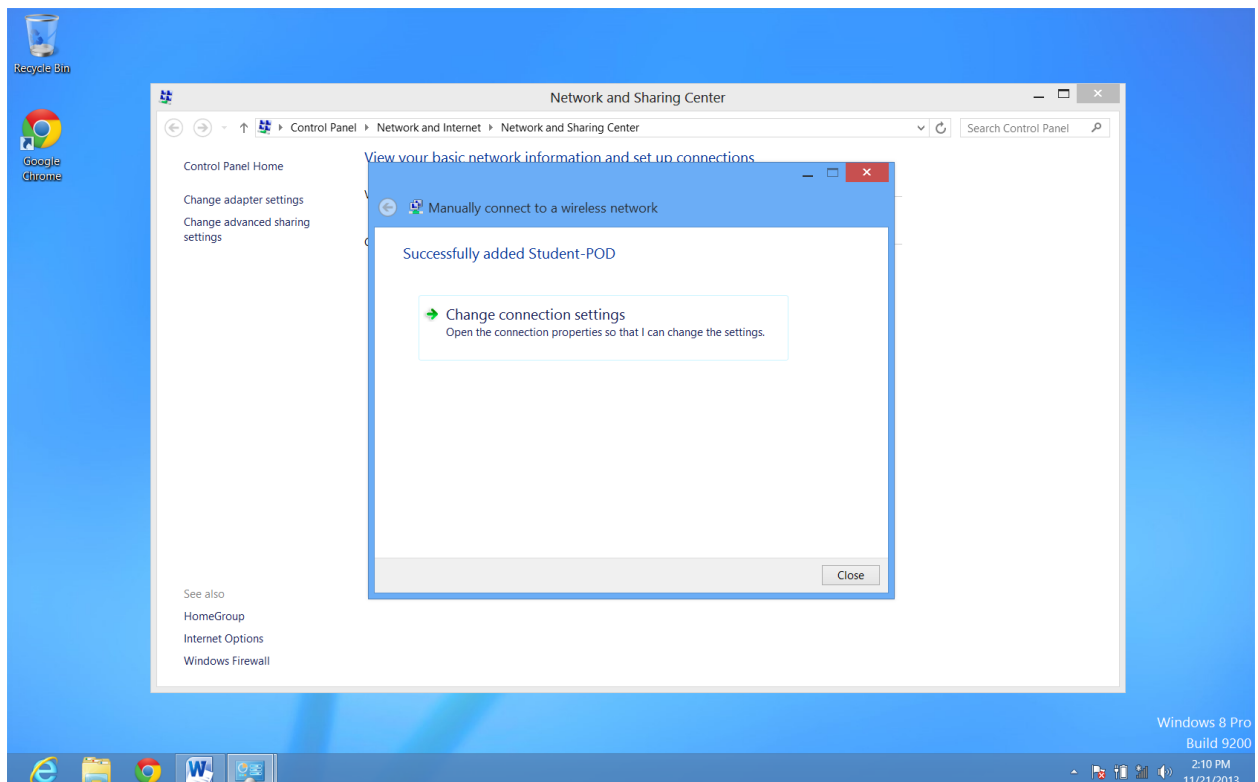
Select Manually connect to a wireless Network and click Next



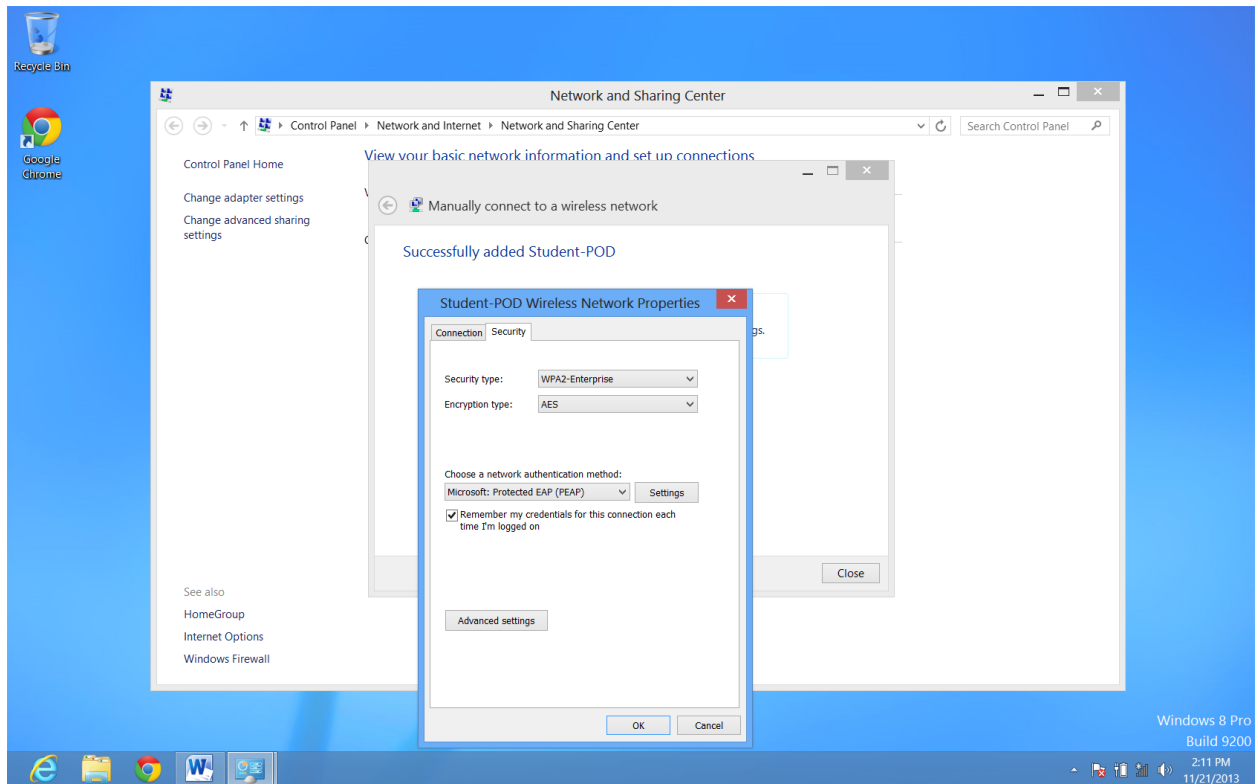
Type Student-POD in the Network name and choose WPA2-Enterprise for security type and click Next



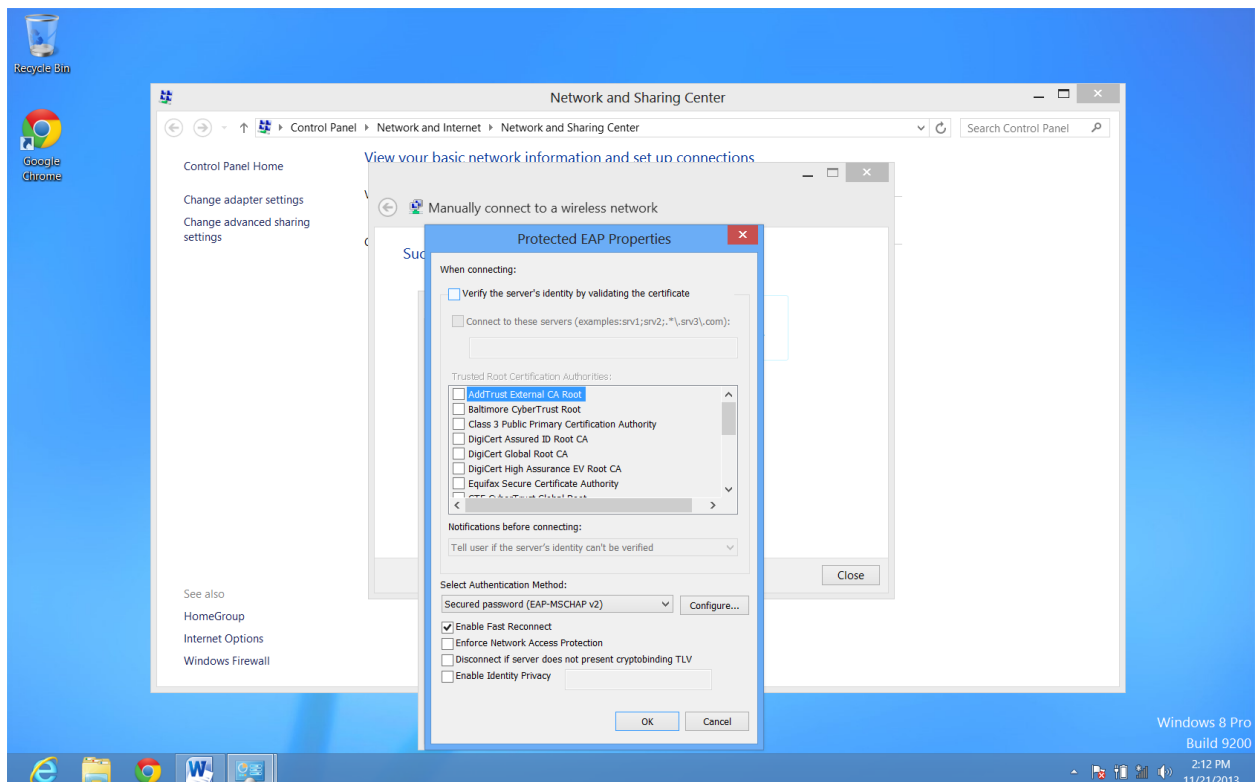
Double Click on Change connection settings



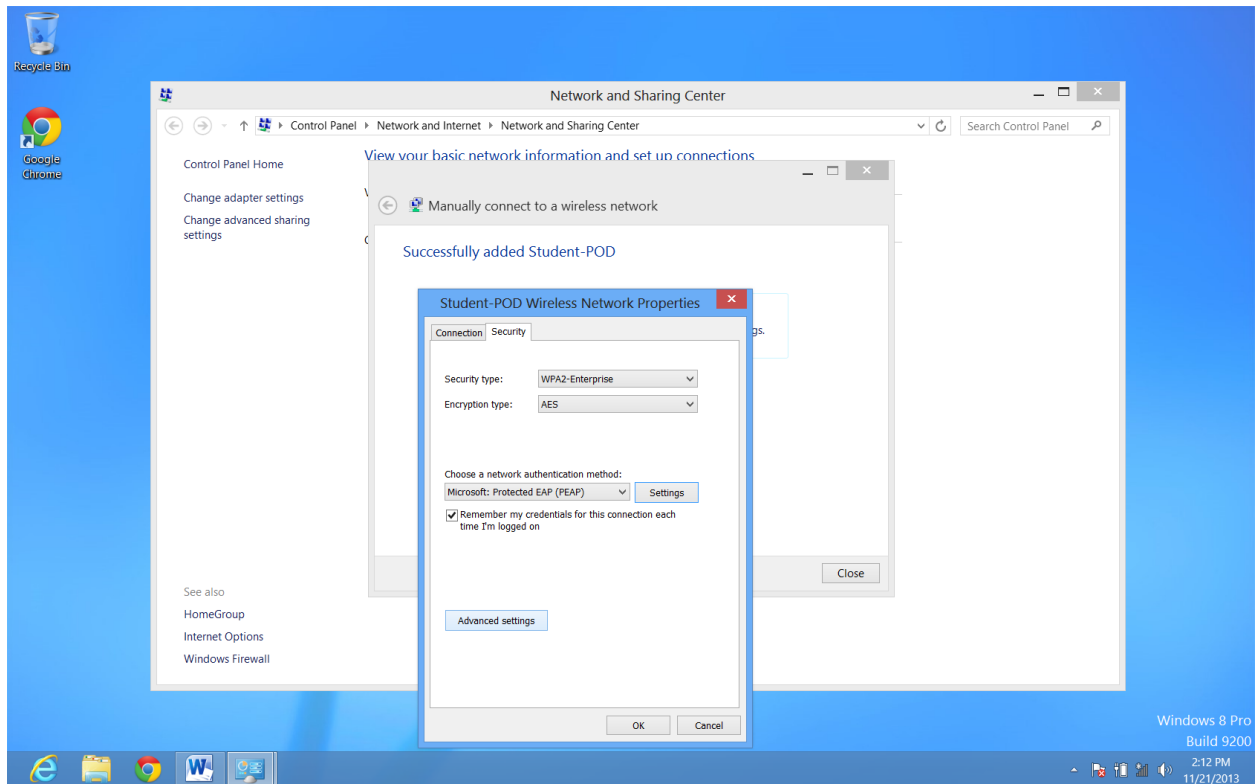
Click on the Security Tab then click on Settings



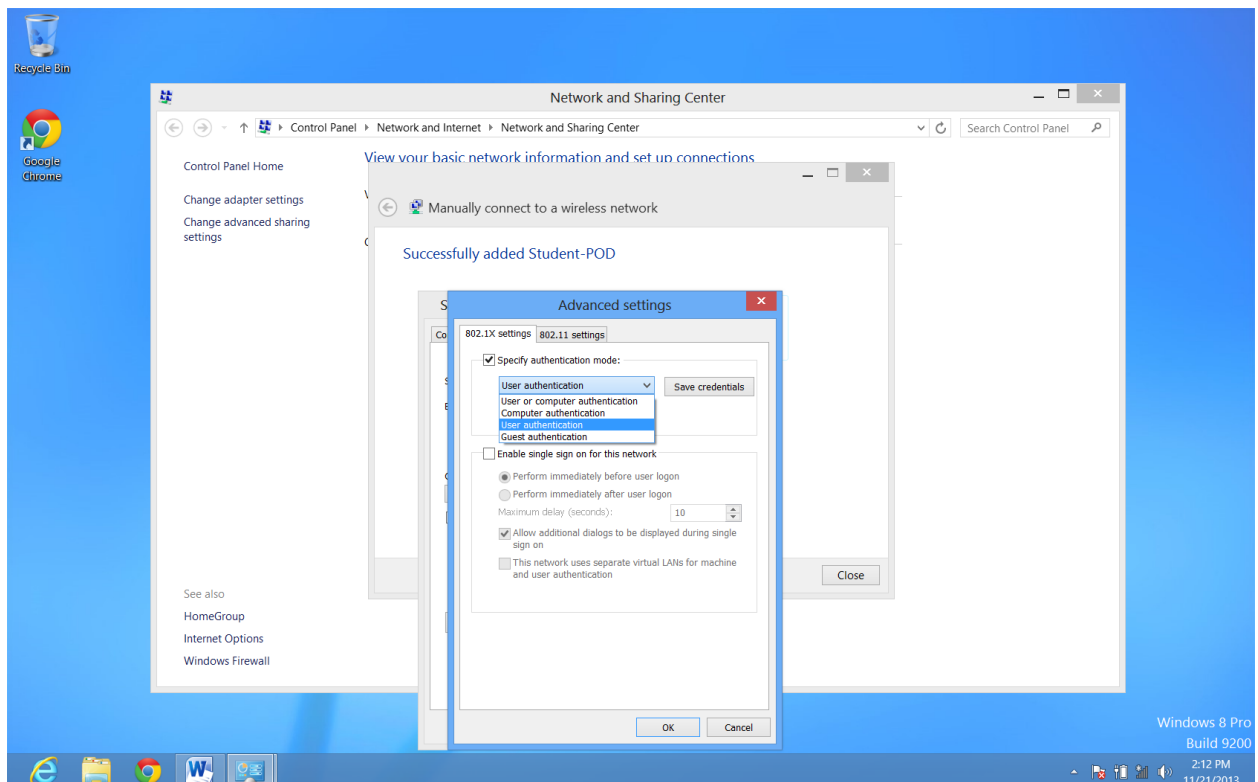
Uncheck Verify the server's identity.....and click OK



Now click on Advanced settings



Check Specify authentication mode and choose User authentication and click OK click OK again



Exit out of all screens until you are back to the desktop. Move your mouse to any corner to see wireless and click on connect



Enter your Username and Password click ok and you should connect to the wireless within a few seconds

